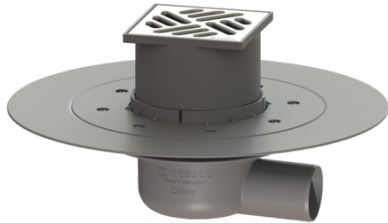


Classic bathroom drain glued fl. DN 50, horizontal, Slotted grating, K 3



Article information

Item no.: 40150.90
GTIN: 4026092028872
Price group: 10

Advantages

- Odour trap height: 50 mm
- Lip seal fixed on the drain body
- System 100 - modular design

Description

The Classic bathroom drain is suitable for indoor floor drainage. The drain made of ABS is equipped with a telescopic, height-adjustable upper section made of polymer, a removable odour trap as well as a secure, reliably installed seal. Including glued flange and mating flange for clamping PVC sheeting (vapour barriers) or for alternative waterproofing layers (additional honeycomb fabric required).

Variant

Waterproofing layer on the upper section:	Adhesive flange (suitable for moisture barriers)
Waterproofing layer on the drain body:	Adhesive flange (suitable for moisture barriers)
Water supply:	W3-I
Sealing water height:	50 mm
Discharge rate (l/s) with 20 mm backwater:	0,8

General characteristics

Standard:	EN 1253-1
Nominal size (DN):	50
Outer diameter (OD):	50 mm

Dimensions

Vertical adjustment:	20 - 60 mm
Net weight:	0,83 kg
Gross weight:	1,07 kg
Cutout dimension, width:	350 mm
Cutout dimension, length:	350 mm
Vertical adjustment:	vertically adjustable upper section
Length:	332 mm
Width:	332 mm
Packaging dimension:	length
Packaging dimension:	width

Packaging dimension:	height
Tank/drain body	
Number of outlets:	1
Material of drain body:	ABS
System:	lateral
Coverage features	
Type of cover:	Slotted cover
Cover material:	Stainless steel 14301
Colour of cover:	silver
Width of cover:	100 mm
Length of cover:	100 mm
Surface:	Polished SST
Frame material:	ABS
Cover locking:	placed
Load class:	K 3 (EN 1253-1)
Rim length:	107 mm
Rim material:	107 mm
Shape of upper section:	square
Upper section material:	ABS
Odour trap:	included